



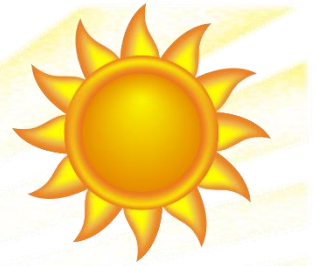
SUMMER 2025 NEWSLETTER

Philomath Community Services | *People Helping People*

Physical Address: 360 S. 9th Street, Philomath, OR 97370

Mailing Address: PO Box 1334, Philomath, OR 97370

www.philomathcommunityservices.org | (541) 929-2499



Hello from all of us at Philomath Community Services!

As summer settles in with its long days and light-filled evenings, we're reminded that brightness can come from many places—including the neighbors who show up, give time, and find ways to support one another.

While federal resources have become harder to count on, our local response has been anything but uncertain. We've seen volunteers double down, partners reach out, and the community find new ways to keep vital programs going strong.

We are so grateful—for every can of food, each shared hour, and the quiet moments of generosity that don't always make headlines. Thank you for being part of this effort, and this place, where people helping people isn't just a motto—it's how we move forward. There is always plenty to share. Let's dive right in!

Celebrating 50 Years of Service

Join us August 7 at Cardwell Hill Winery as Philomath Community Services celebrates 50 years of service! Enjoy a BBQ dinner, live Celtic music, and exciting auctions—all to support our mission to fight hunger in our community. Sponsor a table to secure your tickets! Table sponsorships available [now on our website](#).

Tomato Giveaway

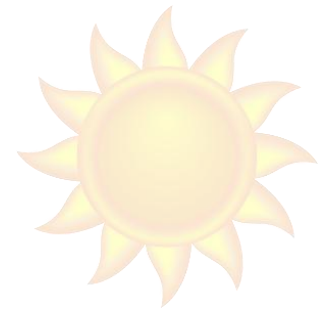
Any tomato lovers out there? 🍅 Big thanks to the Master Gardeners for supplying the Tomato Giveaway event at PCS this past spring! Some tomato plants were brought in by Master Gardeners, while others were grown at our very own Lupe's Community Garden. Lupe's Garden Managers and Master Gardeners Natalie and Candy are shown below manning the tomato table.



PCS in the News

Below are some recent articles that give PCS mention in our local news:

- ★ [Lupe's Community Garden hosting Kids Planting Day event](#)
Philomath News | June 13, 2025
- ★ [Marys River Holds Annual Plant Sale](#) (page 6; proceeds went to benefit PCS)
Oregon State Grange Bulletin | June 2025
- ★ [Grange's Plant Sale and Seed Swap coming this weekend](#) (proceeds went to benefit PCS)
Philomath News | April 23, 2025
- ★ [Last weekend's Stamp Out Hunger brings in nearly 900 pounds of food](#)
Philomath News | May 17, 2025
- ★ [Philomath participating in Stamp Out Hunger Food Drive on Saturday](#)
Philomath News | May 6, 2025



Student Art Brightens Our Spaces

We're thrilled to share that Philomath High School art students have added a burst of creativity to PCS! Just weeks ago, stunning 3D artwork and collages—crafted by the talented teens of the PHS Art Class—now grace the walls of June's Kids Kloset and Nancy's Food Pantry. These vibrant pieces do more than decorate—they reflect the spirit of the natural world and healthy food that is in everything we do.

To the students and educators behind this gift: thank you for using your artistry to bring joy to our neighbors.



PCS in the Corvallis Sustainability Coalition's Community Scrapbook

In case you missed it, the Corvallis Sustainability Coalition's Community Scrapbook ([link here](#)) is a fantastic summary of local efforts to advance sustainability in our area. PCS shows up at timestamp 5:02 in the linked video. Thank you for recycling, and thank you for keeping our earth healthy!



Networking

One thing we hear a lot is that PCS is not a “hand out” but a **hand up**. Here at PCS, folks find friendships and encouragement that can go well beyond supplemental groceries or clothing. This past June, we had the privilege of partnering with the Philomath Area Chamber of Commerce to host a Business After Hours Event. PCS members and volunteers were able to facilitate connection among local professionals, enjoying great conversations and building valuable relationships in a relaxed atmosphere.

Stamping Out Hunger

This past spring, despite a postcard hiccup that left some without a notification, our community rallied in extraordinary fashion for the 2025 Stamp Out Hunger Food Drive—the largest single-day food drive in the United States. Every second Saturday in May, letter carriers nationwide collect non-perishable food donations left by mailboxes, and here in Corvallis and Philomath, that tradition carried on with heart.

When the usual notifications didn't arrive, you stepped in. You emailed, posted, called, and talked—to neighbors, coworkers, congregations, and more. And your efforts made all the difference. Thanks to your hustle and generosity, food donations (weighing nearly half a ton) flowed in to benefit those in need.

In a year marked by challenges, you reminded us that a strong community doesn't wait for reminders—it shows up, adapts, and gives anyway. From every bag left by a mailbox to every message shared to spread the word, thank you for being the force that made this year's drive a powerful success.



See you at the Market!

The Philomath Farmers' Market is in full swing! PCS often hosts a table, so please feel welcome to stop by!

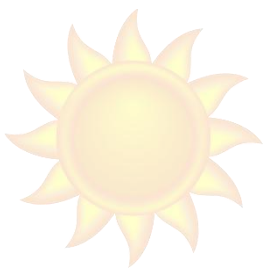
This wonderful market was established as a program of the nonprofit Bountiful Backyard in 2019 as they geared up for a 10-week pilot season in 2020. Getting the market up and running, then hiring the first Market Manager in 2021 (who is now among the leaders of the nonprofit) took a tremendous amount of effort, personal sacrifice, and community support. PCS was intimately involved in those early days, with members of our Board of Directors sitting on the Advisory Committee that met routinely in City Hall prior to the market's initial launch.

Now in 2025, the Philomath Farmers' Market is entering its 22-week season and is bigger than ever. What a joy to watch it grow!



Bags: A Constant Need

Calling for bags, again! We have a bag shortage and would love to accept your donations of clean, reusable fabric, paper, or plastic shopping bags. Thank you so much! Bring them buy during hours listed on our website (here is a link to our [Donations Page](#).) If you “shop” at PCS and receive a reusable bag, please bring it back it you are able!



Tours with the VP

Want to be part of something fulfilling!? Jodi Russell, the PCS Vice President, is extending an offer to facilitate tours of PCS for those who are interested in learning more information on volunteering and other ways of getting involved. Schedule a tour by reaching out to Jodi directly at 541-740-751(seven). ❤️

Celebrating our Volunteers

This past season, we gave special thanks to the volunteers of our organization. They are the heart and soul of PCS and truly live our motto: People Helping People. Their dedication, passion, and hard work makes a lasting difference in the lives of those we serve.

And special shoutout to our visionary Board, pictured here, who lead by example in building a stronger future for our community. **Thank you** to all our volunteers who keep us pushing forward.



Celebrating Community Gardens

And let's not forget about Community Garden Week! (More on Community Garden Week [here](#).) Community gardens bring neighbors together through growing healthy food through land stewardship, and we at PCS are truly proud of our little community garden.

Lupe's Community Garden at PCS kicked off gardening sessions in mid-April this past spring. Check our [website](#) for hour updates as the temperatures become hotter.



Diaper Day Delivers—Thanks to You

This past June at PCS, our shelves were stocked and spirits lifted on Diaper Day. With 8,000 baby diapers delivered by the Lane County Diaper Bank and hundreds of adult diapers and pads generously donated, our team is reminded once again of what community compassion looks like in action. These essentials make a real difference for families and individuals across all ages. Thank you for helping us meet the need—with dignity.



Newsletter Signup

Remember, if you are reading this but have not signed up for our newsletter, [subscribe here!](#)

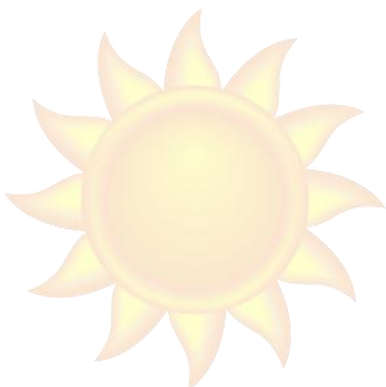
Kids Planting Day

In June, Children had the opportunity to visit Lupe's Community Garden to learn about plants and how to care for them. They even got to choose a vegetable, herb, or flower to plant and take home!

Lions and Easter Eggs

Last but certainly not least, remember Roland the lion from our Spring Newsletter a few months ago? He made another appearance at the Philomath Frolic Easter Egg Hunt! Another big thanks to puppeteer and PCS Past President Jean Goul. What a fun way to enjoy the time of year when we start seeing bunnies hopping around, chicks hatching, and flowers blooming—a time for fresh starts and renewed hope. At PCS, we believe People Helping People leads to new beginnings. And here we are beginning summer!

Stay cool out there, and see you in the sunshine!



PCS Online

And remember, PCS may be found online at Facebook, YouTube, Instagram, and Nextdoor. What is your preferred online platform? You are invited to [contact us](#) and let us know where we can reach you online.



Thank you for your support!



*This institution is an equal opportunity provider.
Philomath Community Services is a 501(c)(3) non-profit.*